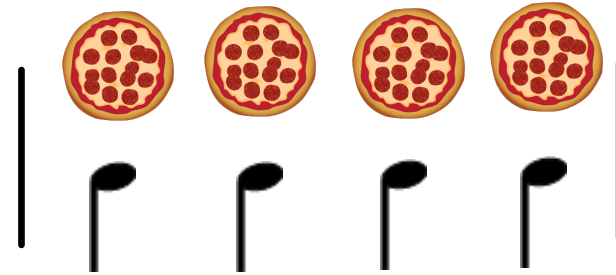


4  
4

=



Four-Four Time Signature

FOUR beats in each measure  
QUARTER notes get the beat



Barline

Separates measures



Measure  
box created by 2  
barlines



Double Bar  
"The End"

⋮

Repeat Sign

two dots = do it two times

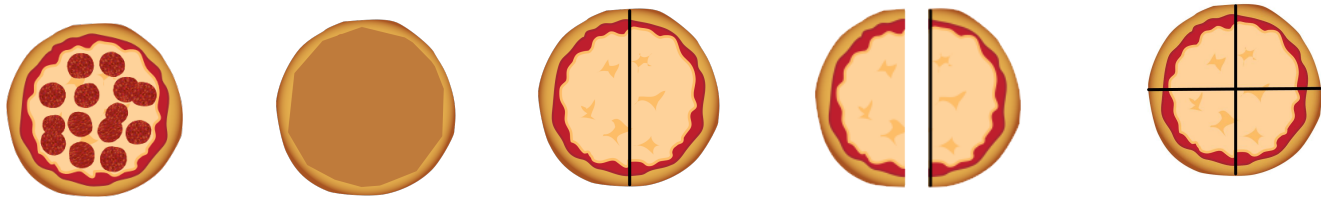
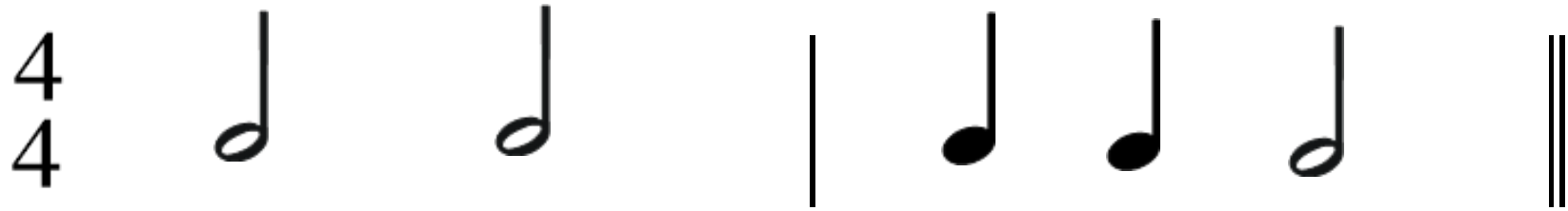
 - Half Note

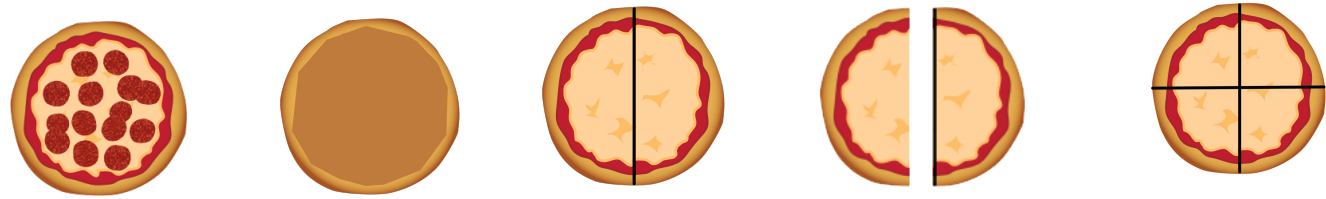
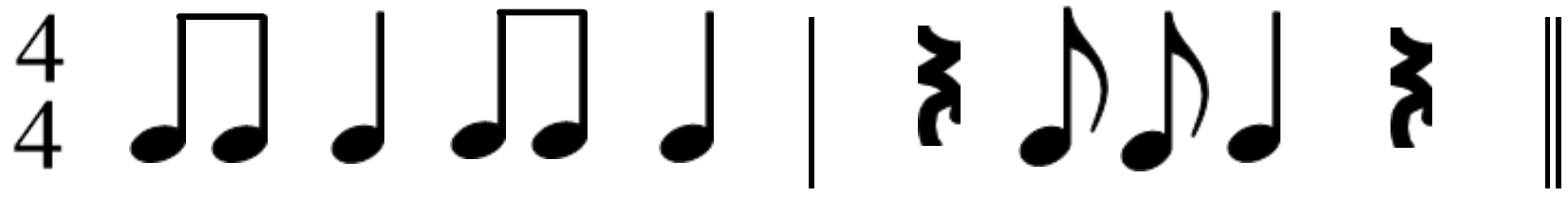
 - Eighth Notes

 - Quarter Note

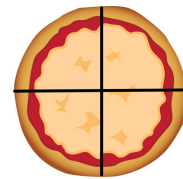
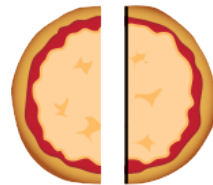
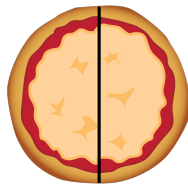
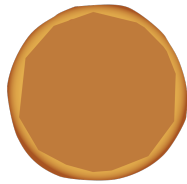
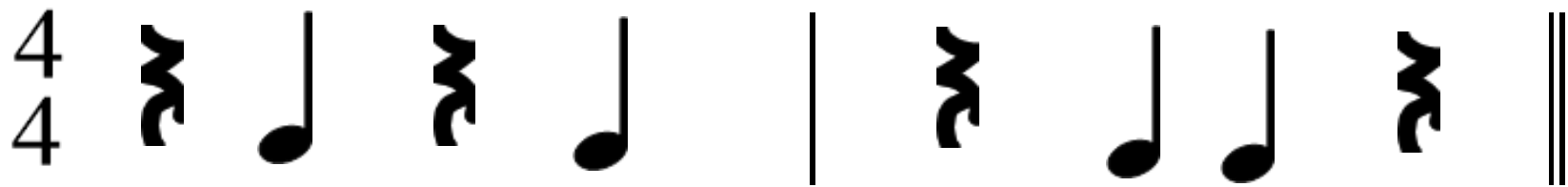
 - Quarter Rest

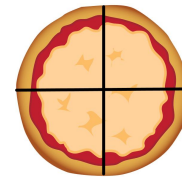
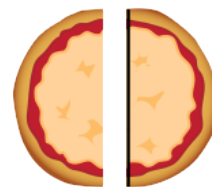
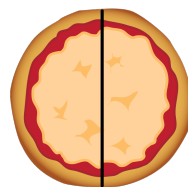
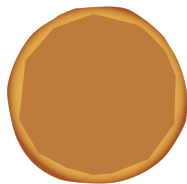












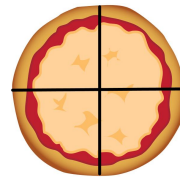
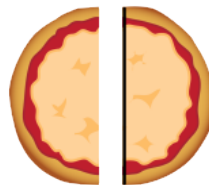
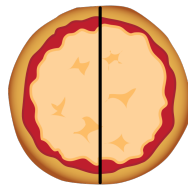
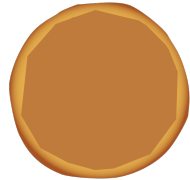


Dotted Half Note

Three Beats

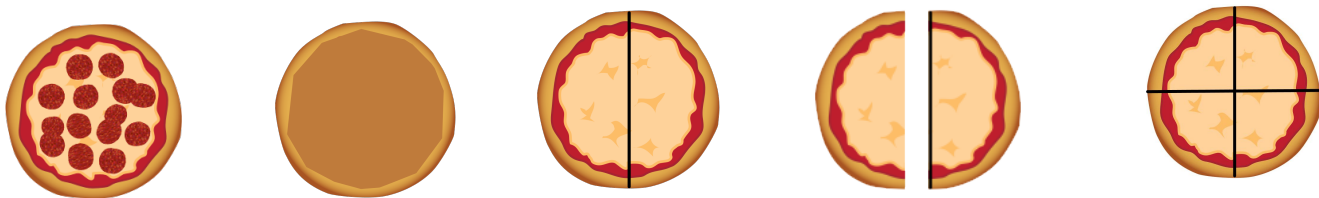
"ta-a-a"

4  
4

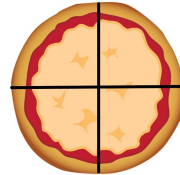
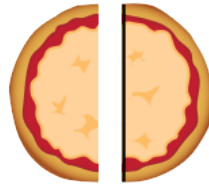
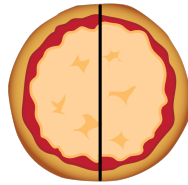
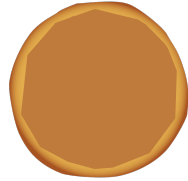




16th Notes  
4 fit inside 1 beat  
"ti-ki-ti-ki"



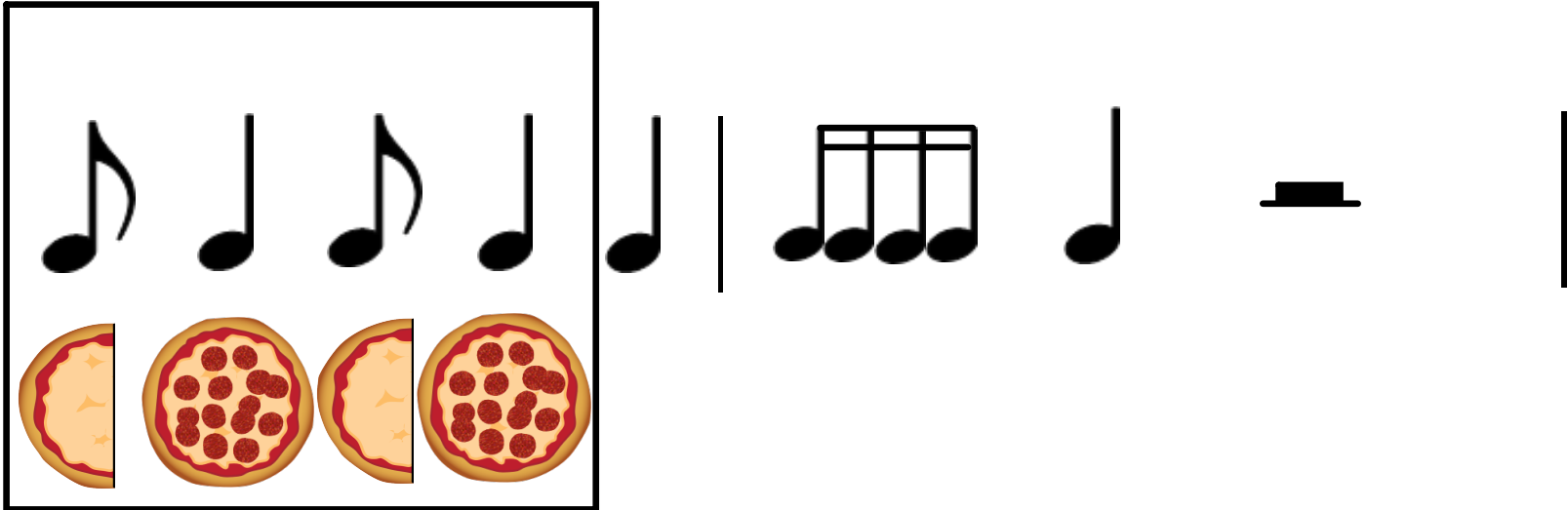
4  
4



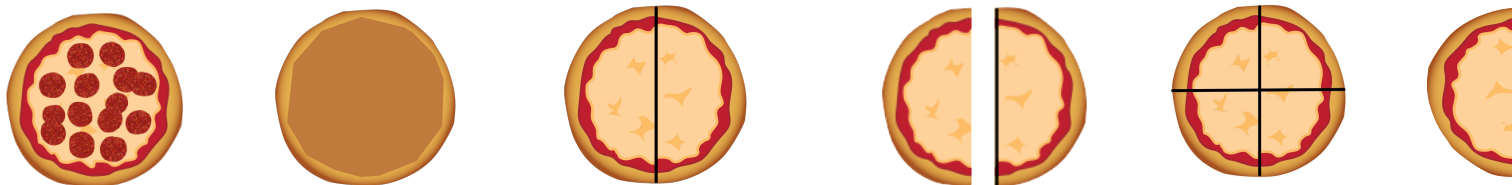
# "Syncopation"

Rhythms that go against the beat.

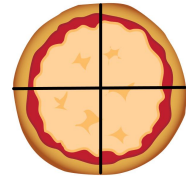
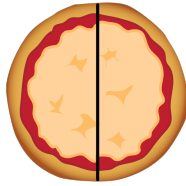
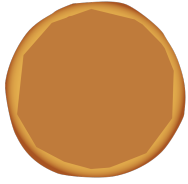
4  
4



A 4/4 time signature is shown on the left. A box contains a musical staff with four quarter notes, each aligned with a pizza icon below it. The first and third pizzas are split vertically, representing a half note. The second and fourth pizzas are whole, representing quarter notes. To the right of the box, a musical staff shows a quarter rest, a beamed eighth note pair, a quarter note, and a half note, followed by a double bar line.







4  
4



