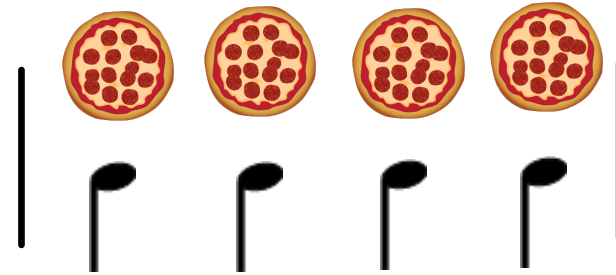


4
4

=



Four-Four Time Signature

FOUR beats in each measure
QUARTER notes get the beat



Barline

Separates measures



Double Bar
"The End"

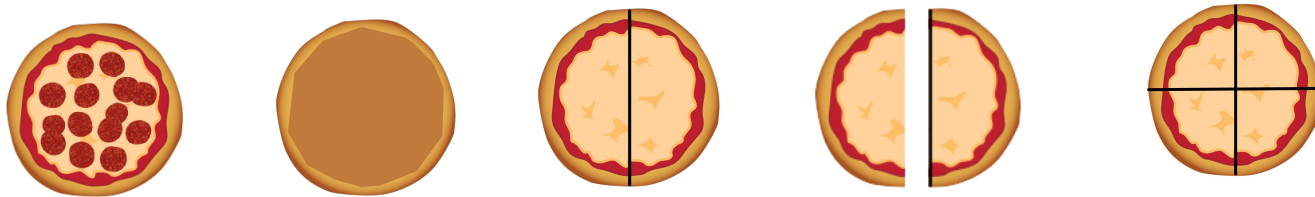
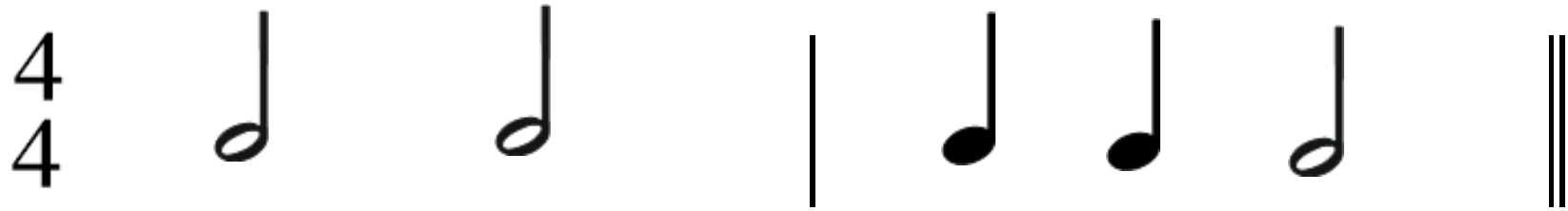
 - Half Note

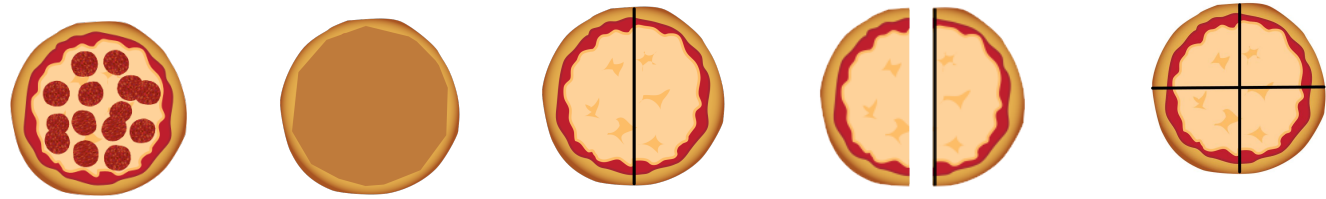
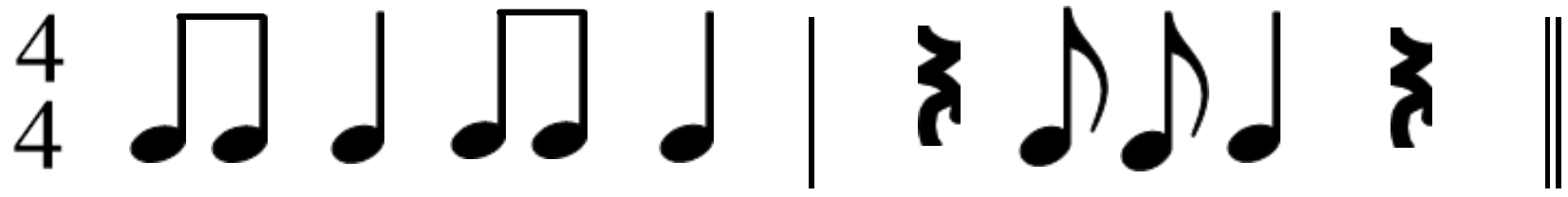
 - Eighth Notes

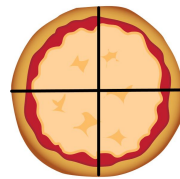
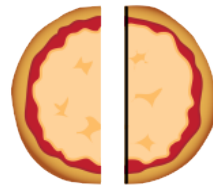
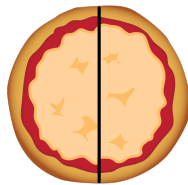
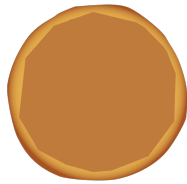
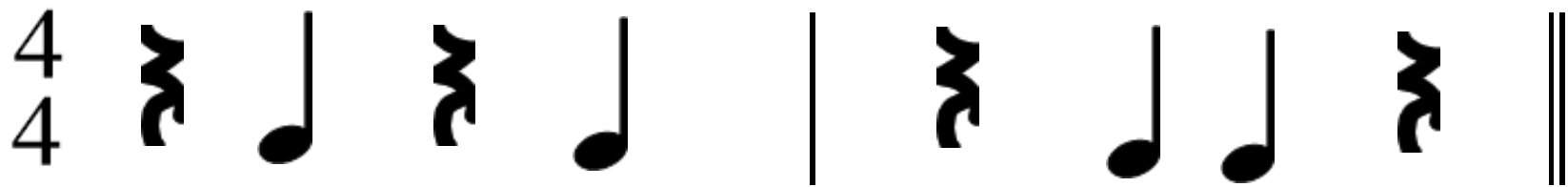
 - Quarter Note

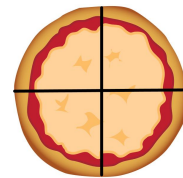
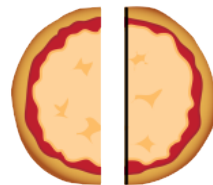
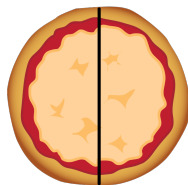
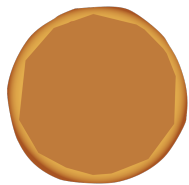
 - Quarter Rest











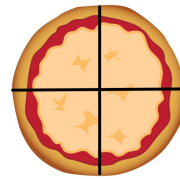
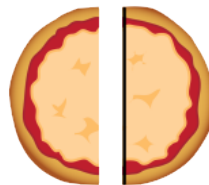
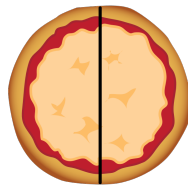
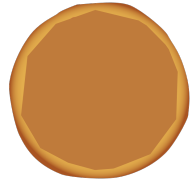


Dotted Half Note

Three Beats

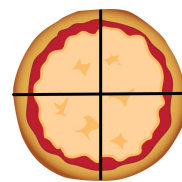
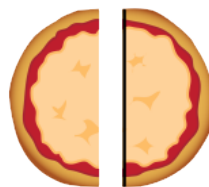
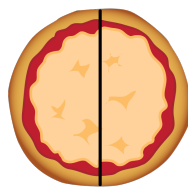
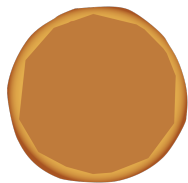
"to-o-o"


4
4

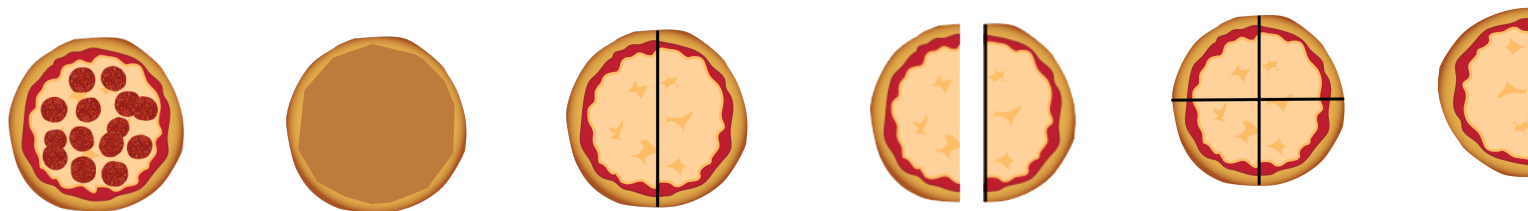





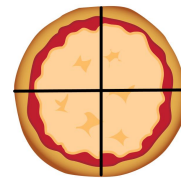
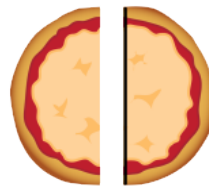
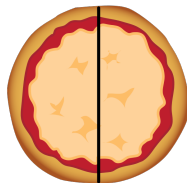
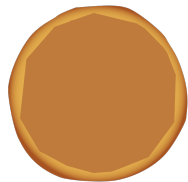
16th Notes
4 fit inside 1 beat
"ti-ki-ti-ki"



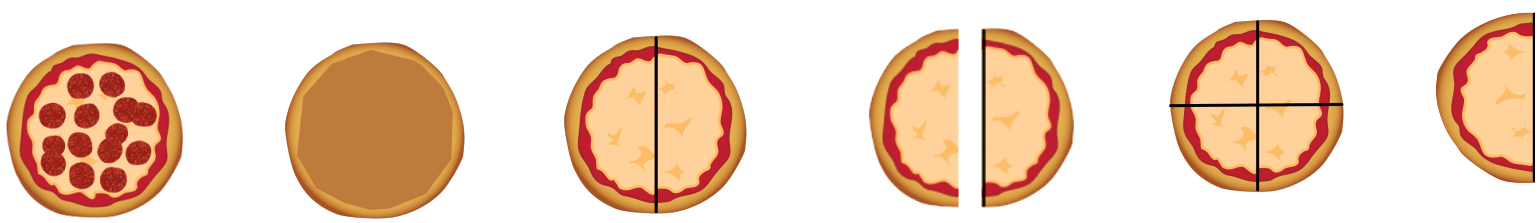
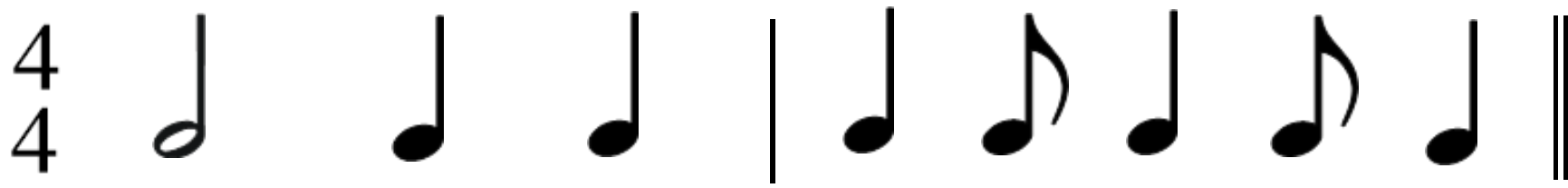
 = dotted quarter note
1 and 1/2 beats
"tim"



 = dotted quarter note
1 and 1/2 beats
"tim"



"Syncopation"
Rhythms that go against the beat.



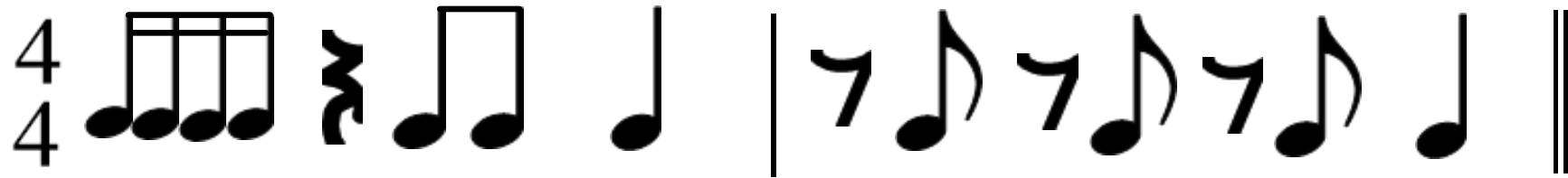
7

8th Rest = Gets 1/2 a beat of silence



7

8th Rest = Gets 1/2 a beat of silence





"ti-ki-ti" - Takes up ONE beat all together



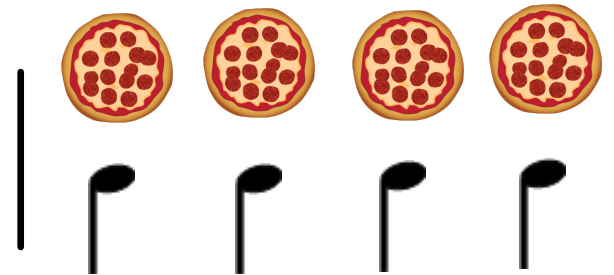


"ti-ki-ti" - Takes up ONE beat all together



4 how many
4 what kind

4
4 =



Four-Four Time Signature

There are FOUR QUARTER
notes in each measure

6/8 Time Signatures

6
8

There are 6

8th notes in each measure

The diagram illustrates the 6/8 time signature. On the left, the numbers '6' and '8' are stacked vertically. To the right, two measures of music are shown. Each measure contains three eighth notes. Above the first note of each measure is a large pizza slice, and above the second and third notes are two smaller pizza slices, representing the 6/8 division. Below each measure, the rhythmic pattern 'TI ti ti' is written in blue text.

6
8



TIM



TIM



TI ti ti



TIM



